

Course Guide

MedWise Advisor™ Certification



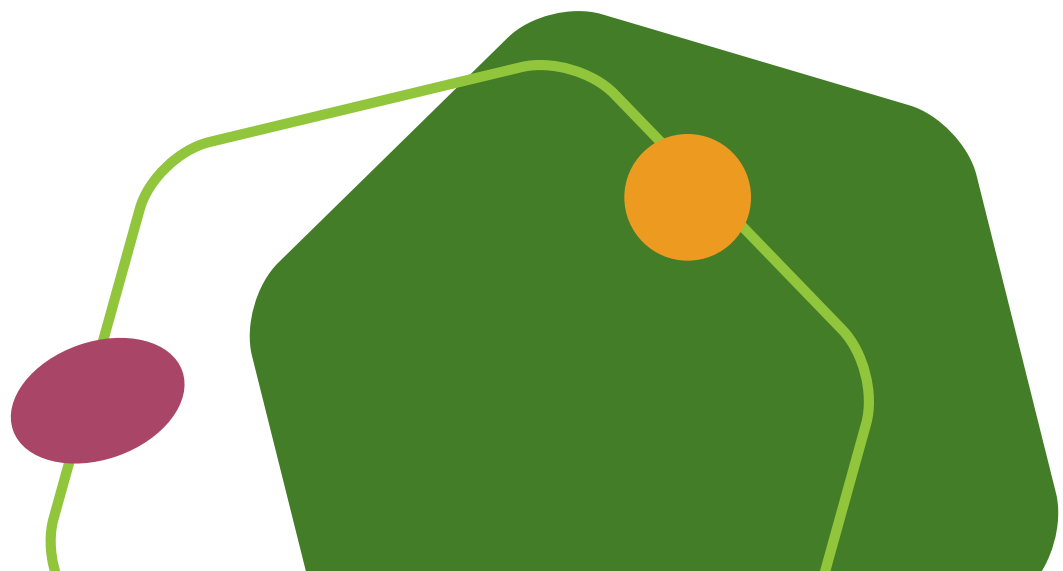
TRHCUniversity
Learning Solutions

learn.trhc.com

Copyright © 2022, Tabula Rasa HealthCare, Inc., All Rights Reserved. These materials are confidential and proprietary information of Tabula Rasa HealthCare, Inc. and may not be reproduced in whole or in part without the written consent of Tabula Rasa HealthCare, Inc. These materials may contain recommendations which are not intended to be a substitute for clinical judgement or a physician's medical decisions and advice. For all medical emergencies, contact local emergency services.s. | 022022

Table of Contents

Training Overview	3
Key Features.....	3
Benefits to Participants	3
Who Should Participate	3
Program Requirements	3
Core Courses, Curriculum, and Objectives	4
Pharmacist-driven Medication Risk Mitigation Certificate Program	6
Method of Training.....	8
Program Updates.....	8
Continuing Education Updates.....	8
Education Credit Statements	9





Training Overview

MedWise Advisor certification provides clinicians in various care settings with clinical and operational training for medication risk mitigation services.

Desired Outcomes

After completing this program, learners should demonstrate the ability to:

- Make clinical recommendations based on the proprietary MedWise® Matrix
- Identify medication-related problems and plan recommendations
- Realize the increased significance of patient consulting
- Review Systemized Nomenclature of Medicine (SNOMED) functionality

Benefits to Participants

There are many benefits to completing this training program, including:

- Deeper clinical understanding of drug burden
- Further knowledge of multi-drug interactions and risk mitigation
- Ability to make more appropriate recommendations to optimize patient outcomes

Who Should Participate

This MedWise Advisor certification is intended for pharmacists who are interested in improving medication safety and providing enhanced clinical services through the use of MedWise Science medication decision support tools.

Program Requirements

The program includes the clinical and operational materials listed within the curriculum. Upon successful completion of all components, certified pharmacists will be given access to MedWise Science technology.

Core Courses, Curriculum, and Objectives

I. Competitive Inhibition Burden

- a. List variations in individual pharmacokinetic and pharmacodynamic parameters that may impact patient risk for adverse events
- b. Explain the general attributes of enzyme substrates, inhibitors, and inducers
- c. Describe the fundamental principles of competitive inhibition
- d. Estimate the impact that competitive inhibition may have on a given medication regimen
- e. Apply principles of competitive inhibition burden to patient case scenarios

II. Aggregated Anticholinergic Burden and Aggregated Sedative Burden

- a. Explain the risk(s) associated with anticholinergic and sedative medication use in older adults
- b. Identify relevant scientific literature that provides evidence for poor outcomes with anticholinergic and sedative medications
- c. Describe the impact that anticholinergic and sedative medications may have on prescribing cascades
- d. Apply principles of anticholinergic and/or sedative burden to patient case scenarios

III. Aggregated Long QT Syndrome (LQTS)

- a. Outline the relationship of basic electrophysiological concepts with mechanisms of QT prolongation and Torsade de Pointes
- b. List predisposing factors to Aggregated LQTS
- c. Describe methods of minimizing the impact of given risk factors on overall medication and patient risk
- d. Apply principles of LQTS to patient case scenarios

Core Courses, Curriculum, and Objectives

IV. Pharmacokinetic Case Examples

- a. Identify pharmacokinetic and pharmacodynamic interactions in given patient case scenarios
- b. Evaluate changes in partial metabolic clearances in the context of simultaneous, multi-drug interactions
- c. Recommend dose and medication regimen adjustments under the conditions of simultaneous, multi-drug interactions
- d. Recognize special patient populations and assess their medication regimens based on their specific clinical requirements

V. Case Examples: Clinical Application of Pharmacodynamic and Pharmacokinetic Multi-Drug Interaction Principles

- a. Apply principles of anticholinergic and/or sedative burden to patient case scenarios
- b. Apply principles of LQTS to patient case scenarios
- c. Apply principles of competitive inhibition burden to patient case scenarios
- d. Apply general pharmacotherapy knowledge of proper dose, disease state management, and medication management to patient case scenarios

VI. Medication Risk Mitigation Final Exam

Pharmacist-Driven Medication Risk Mitigation Certificate Program

I. Self-study: Documenting a Patient Case

- a. After completing operational platform training, learners will be given three standardized cases to complete and return documentation
- b. Learners will be evaluated by TRHCU pharmacists and given feedback on their work

II. Eight-hour Clinical Case Discussion with TRHCU

- a. Clinical application of aggregated anticholinergic burden and aggregated sedative burden
- b. Clinical application of aggregated Long QT Syndrome
- c. Clinical application of competitive inhibition burden
- d. Clinical application of drug interactions with inhibitors and inducers

Within sessions a–d (each are one hour live), learners will be split into groups where they will be given standardized cases to discuss with their peers; they will be asked to determine three medication-related problems and recommendations, and present their assessment of each to the larger group (including TRHCU faculty) for feedback.

- e. Optimizing patient outcomes through effective documentation:
Aggregated anticholinergic burden and aggregated sedative burden
- f. Optimizing patient outcomes through effective documentation:
Aggregated Long QT Syndrome
- g. Optimizing patient outcomes through effective documentation:
Competitive inhibition burden



h. Optimizing patient outcomes through effective documentation: Inhibitors and inducers

Within sessions e–h, pharmacists will be given standardized cases and asked to document one medication-related problem, including an executive summary, rationale, and patient action steps; pharmacists will review their documented recommendation with their peers and TRHCU faculty for feedback.

III. MedWise Advisor Certification Final Exam

IV. Self-study: Final Medication Risk Mitigation Assessment



Method of Training

This program is a combination of interactive online curriculum, self-study, and live discussion. The structure, online learning, and resources are available via Tabula Rasa HealthCare University (TRHCU) at learn.trhc.com. Supplemental materials and optional trainings may be offered through live question-and-answer sessions and one-on-one pharmacist coaching.

Program Updates

Because this program undergoes continual quality improvement, new information and training modules will be communicated with the participants to ensure they are adequately informed. Additionally, ongoing training is required affording appropriate execution of the medication decision support tools.

Continuing Education Credits

Credits will be reported to the National Association of Boards of Pharmacy (NABP) within 30 days of successful completion of each clinical module that offers continuing education credits if TRHCU has been provided with all learner information required by the NABP. This includes NABP ID and birthdate (MMDD). The modules in tier 1 offering credit include Competitive Inhibition Burden, Aggregated Anticholinergic Burden and Aggregated Sedative Burden, Aggregated Long QT Syndrome, Pharmacokinetic Case Examples, and Case Examples: Clinical Application of Pharmacodynamic and Pharmacokinetic Multi-Drug Interaction Principles. Upon watching the videos and completing the post-tests with at least 80 percent correct answers, you will be able to download a PDF certificate for your records. Credit is also available upon completion of the Pharmacist-driven Medication Risk Mitigation Certificate Program.



JOINTLY ACCREDITED PROVIDER™
INTERPROFESSIONAL CONTINUING EDUCATION

Education Credit Statements

Accreditation Statement

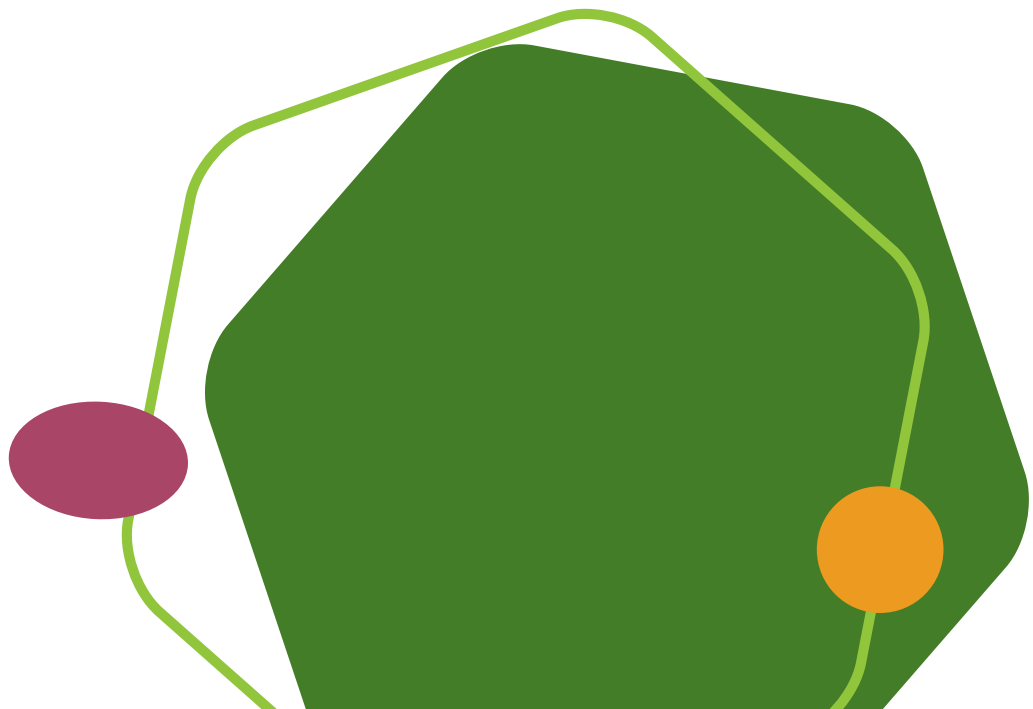
In support of improving patient care, TRHC is jointly accredited by the Accreditation Council for Continuing Medical Education (ACCME), the Accreditation Council for Pharmacy Education (ACPE), and the American Nurses Credentialing Center (ANCC) to provide continuing education for the healthcare team.

Competitive Inhibition Burden

- **Pharmacy:** TRHC is accredited by the ACPE as a provider of continuing pharmacy education. This enduring material, *Competitive Inhibition Burden*, is assigned Universal Activity Number (UAN) #JA4008180-0000-19-065-H04-P and #JA4008180-0000-19-065-H04-T (Pharmacy Tech) and is accredited for 1.0 hour(s) for completion of this continuing education session. Term of approval is from this date on September 9, 2019 until September 9, 2022. *Competitive Inhibition Burden* is a knowledge-based continuing education activity.
- **Category 1:** TRHC designates this enduring material for a maximum of 1.0 AMA PRA Category 1 Credit(s)[™]. Physicians should claim only credit commensurate with the extent of their participation in the activity. AAPA accepts AMA category 1 credit for the PRA from organizations accredited by ACCME.
- **Nurse Continuing Education:** TRHC designates this activity for 1.0 contact hours for nurses. Nurses should claim only credit commensurate with the extent of their participation in the activity. Nurses licensed in Iowa and California: This activity was planned and developed in accordance with the continuing education standards of the ANCC. The Iowa Board of Nursing and the California Board of Nursing will honor ANCC continuing education credits for face-to-face programs held outside Iowa and California, or for ANCC-approved online recorded courses taken in a self-study format.

Aggregated Anticholinergic Burden and Aggregated Sedative Burden

- **Pharmacy:** TRHC is accredited by the ACPE as a provider of continuing pharmacy education. This enduring material, *Aggregated Anticholinergic Burden and Aggregated Sedative Burden*, is assigned UAN #JA4008180-0000-19-063-H04-P and #JA4008180-0000-19-063-H04-T (Pharmacy Tech) and is accredited for 1.0 hour(s) for completion of this continuing education session. Term of approval is from this date on September 9, 2019 until September 9, 2022. *Aggregated Anticholinergic Burden and Aggregated Sedative Burden* is a knowledge-based continuing education activity.
- **Category 1:** TRHC designates this enduring material for a maximum of 1.0 AMA PRA Category 1 Credit(s)[™]. Physicians should claim only credit commensurate with the extent of their participation in the activity. AAPA accepts AMA category 1 credit for the PRA from organizations accredited by ACCME.
- **Nurse Continuing Education:** TRHC designates this activity for 1.0 contact hour for nurses. Nurses should claim only credit commensurate with the extent of their participation in the activity. Nurses licensed in Iowa and California: This activity was planned and developed in accordance with the continuing education standards of the ANCC. The Iowa Board of Nursing and the California Board of Nursing will honor ANCC continuing education credits for face-to-face programs held outside Iowa and California, or for ANCC-approved online recorded courses taken in a self-study format.



Aggregated Long QT Syndrome

- **Pharmacy:** TRHC is accredited by the ACPE as a provider of continuing pharmacy education. This enduring material, *Aggregated Long QT Syndrome*, is assigned UAN #JA4008180-0000-19-064-H04-P and #JA4008180-0000-19-064-H04-T (Pharmacy Tech) and is accredited for 1.0 hour(s) for completion of this continuing education session. Term of approval is from this date on September 9, 2019 until September 9, 2022. *Aggregated Long QT Syndrome* is a knowledge-based continuing education activity.
- **Category 1:** TRHC designates this enduring material for a maximum of 1.0 AMA PRA Category 1 Credit(s)TM. Physicians should claim only credit commensurate with the extent of their participation in the activity. AAPA accepts AMA category 1 credit for the PRA from organizations accredited by ACCME.
- **Nurse Continuing Education:** TRHC designates this activity for 1.0 contact hour for nurses. Nurses should claim only credit commensurate with the extent of their participation in the activity. Nurses licensed in Iowa and California: This activity was planned and developed in accordance with the continuing education standards of the ANCC. The Iowa Board of Nursing and the California Board of Nursing will honor ANCC continuing education credits for face-to-face programs held outside Iowa and California, or for ANCC-approved online recorded courses taken in a self-study format.

Pharmacokinetic Case Examples

- **Pharmacy:** TRHC is accredited by the ACPE as a provider of continuing pharmacy education. This enduring material, *Pharmacokinetic Case Examples*, is assigned UAN #JA4008180-0000-19-066-H04-P and #JA4008180-0000-19-066-H04-T (Pharmacy Tech) and is accredited for 1.0 hour(s) for completion of this continuing education session. Term of approval is from this date on September 9, 2019 until September 9, 2022. *Pharmacokinetic Case Examples* is a knowledge-based continuing education activity.
- **Category 1:** TRHC designates this enduring material for a maximum of 1.0 AMA PRA Category 1 Credit(s)TM. Physicians should claim only credit commensurate with the extent of their participation in the activity. AAPA accepts AMA category 1 credit for the PRA from organizations accredited by ACCME.
- **Nurse Continuing Education:** TRHC designates this activity for 1.0 contact hour for nurses. Nurses should claim only credit commensurate with the extent of their participation in the activity. Nurses licensed in Iowa and California: This activity was planned and developed in accordance with the continuing education standards of the ANCC. The Iowa Board of Nursing and the California Board of Nursing will honor ANCC continuing education credits for face-to-face programs held outside Iowa and California, or for ANCC approved online recorded courses taken in a self-study format.

Case Examples: Clinical Application of Pharmacodynamic and Pharmacokinetic Multi-Drug Interaction Principles

- **Pharmacy:** TRHC is accredited by the ACPE as a provider of continuing pharmacy education. This enduring material, *Case Examples: Clinical Application of Pharmacodynamic and Pharmacokinetic Multi-Drug Interaction Principles*, is assigned UAN #JA4008180-0000-19-067-H04-P and #JA4008180-0000-19-067-H04-T (Pharmacy Tech) and is accredited for 2.0 hour(s) for completion of this continuing education session. Term of approval is from this date on September 9, 2019 until September 9, 2022. *Case Examples: Clinical Application of Pharmacodynamic and Pharmacokinetic Multi-Drug Interaction Principles* is an application-based continuing education activity.
- **Category 1:** TRHC designates this enduring material for a maximum of 2.0 AMA PRA Category 1 Credit(s)[™]. Physicians should claim only credit commensurate with the extent of their participation in the activity. AAPA accepts AMA category 1 credit for the PRA from organizations accredited by ACCME.
- **Nurse Continuing Education:** TRHC designates this activity for 2.0 contact hours for nurses. Nurses should claim only credit commensurate with the extent of their participation in the activity. Nurses licensed in Iowa and California: This activity was planned and developed in accordance with the continuing education standards of the ANCC. The Iowa Board of Nursing and the California Board of Nursing will honor ANCC continuing education credits for face-to-face programs held outside Iowa and California, or for ANCC approved online recorded courses taken in a self-study format.

Pharmacist Driven Medication Risk Mitigation Certificate Program

Tabula Rasa HealthCare is accredited by the Accreditation Council for Pharmacy Education (ACPE) as a provider of continuing pharmacy education. This live material *Pharmacist Driven Medication Risk Mitigation Certificate Program* is assigned Universal Activity Number (UAN) #JA4008180-0000-22-020-L04-P and is accredited for 10.0 hour(s) for completion of this CE session. *Pharmacist Driven Medication Risk Mitigation Certificate Program* is an application-based CE activity.

Disclosure of Conflicts of Interest

TRHC requires instructors, planners, managers, and other individuals who are in a position to control the content of this activity to disclose any real or apparent conflicts of interest (COI) they may have as related to the content of this activity. All identified COI are thoroughly vetted and resolved according to TRHC policy. TRHC is committed to providing its learners with high-quality continuing medical education (CME) activities and related materials that promote improvements or quality in healthcare and not a specific proprietary business interest of a commercial interest.

Faculty

The authors of this content are employees of Tabula Rasa HealthCare.

Planners and Managers

The TRHC planners and managers have nothing to disclose.

Disclosure of Unlabeled Use

This educational activity may contain discussion of published and/or investigational uses of agents that are not indicated by the U.S. Food and Drug Administration. The planners of this activity do not recommend the use of any agent outside of the labeled indication(s).

The opinions expressed in this educational activity are those of the faculty and do not necessarily represent the views of the planners. Please refer to the official prescribing information for each product for discussion of approved indication(s), contraindications, and warnings.



Disclaimer

Participants have an implied responsibility to use the newly acquired information to enhance patient outcomes and their own professional development. The information presented in this activity is not meant to serve as a guideline for patient management. Any procedures, medications, or other courses of diagnosis or treatment discussed or suggested in this activity should not be used by clinicians without evaluation of their patient's conditions and possible contraindications and/or dangers in use, review of any applicable manufacturer's product information, and comparison with recommendations of other authorities.

Financial Support

This program is not supported by any commercial or financial interest.

Privacy and Confidentiality Policy

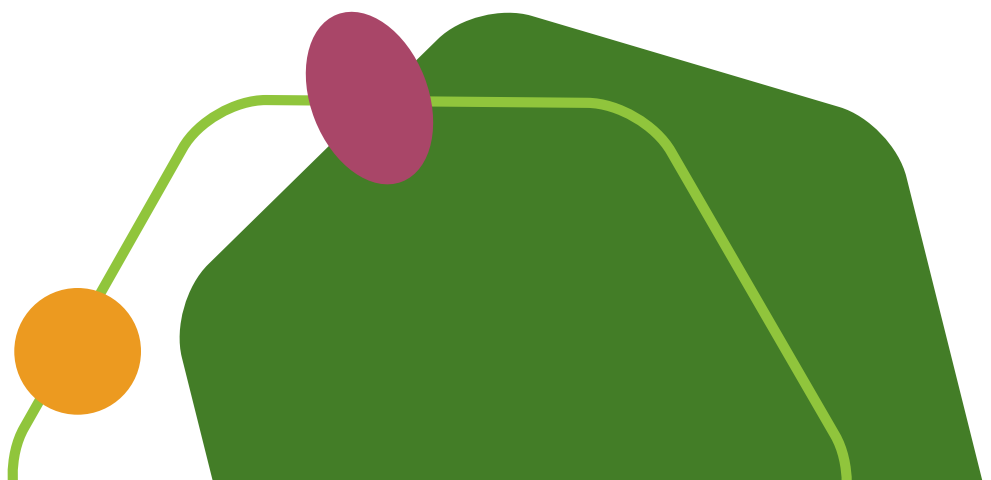
We respect, and are committed to protecting, your privacy. We will not sell your personally identifiable information to anyone. You may read the TRHC Privacy Policy on the TRHC website.

Questions?

If you have any questions, please email: learn.trhc.com.

Target Audience

This activity is intended for prescribers, nurses, and pharmacists who are engaged in the care of all patients in various care settings.





TRHCUniversity
Learning Solutions

CONTACT

 learn@trhc.com

 1-866-648-2767

learn.trhc.com